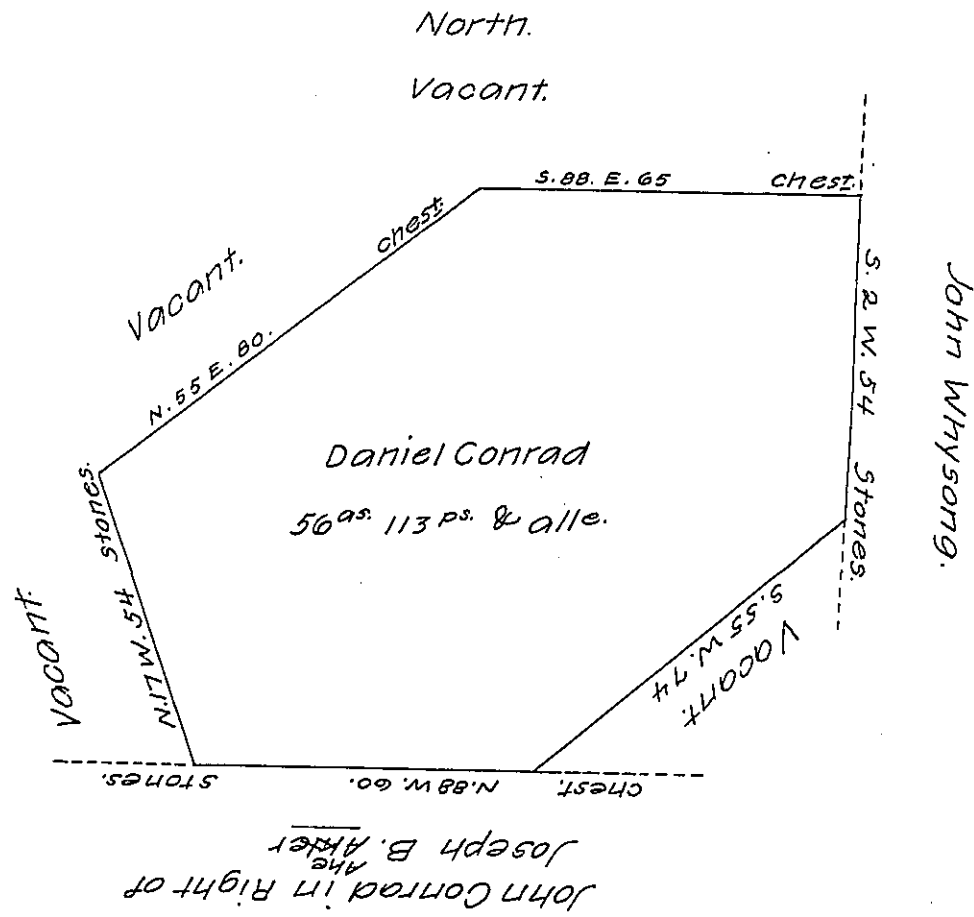


FORM No. 1.



Situate on the head waters of Bobbs Creek in Union Township,
 Bedford County, Pa. Containing 56 acres & 113 perches and the
 usual allowance of six per cent for Roads &c. Surveyed March
 31st, 1882.

BY

Wm. J. Vickroy.

allowing 2 degrees variation.

IN TESTIMONY that the above is a copy of the original remaining on file in
 the Department of Internal Affairs of Pennsylvania, made
 conformably to an Act of Assembly approved the 16th day of
 February, 1833, I have hereunto set my Hand and caused
 the Seal of said Department to be affixed at Harrisburg,
 this twenty eighth day of November, 1906

Leach D. Brown
 Secretary of Internal Affairs.